

**基本規格 SPECIFICATIONS**

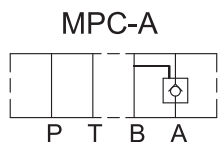
MPC-02-30 系列 SERIES			
最大工作壓力 Maximum Pressure	bar		250 bar ( 3570 PSI )
最大流量 Maximum Flow	LPM		45 LPM ( 11.9 GPM )
重量 Weight	型式 Code: A,B	Kgs	1.25 Kgs ( 2.76 Lbs )
	型式 Code: W	Kgs	1.25 Kgs ( 2.76 Lbs )
使用油品 Fluid Type			礦物性 耐磨性 Mineral, Anti-Wear
黏度範圍 Viscosity	cST		10-400 cST ( 59-1854 SSU )
使用溫度 Operating Temperature	°C		-15-70°C ( -5-158°F )
清潔度 Contamination Level			NAS 12 級以內 Under NAS Class 12
表面處理 Surface Treatment			磷酸鹽皮膜處理 Zinc Phosphate Compound

**型號說明 HOW TO ORDER**

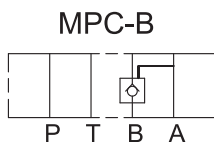
**MPC - 02 W - 50 - 30**

- ① ② ③ ④ ⑤

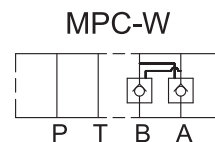
- ① 閥系列 Valve Series  
 MPC = 疊加式導引止逆閥  
 Modular Pilot Check Valve
- ② 通稱口徑 Subplate Mounting Size  
 02 = 通稱 Nominal 1 / 4" ( 6mm )  
 ISO CETOP3  
 DIN NG6  
 NFPA D03
- ③ 控制迴路 Control Port



**A 迴路控制**  
 ( A Port Only )



**B 迴路控制**  
 ( B Port Only )



**A 與 B 迴路控制**  
 ( A & B Port )

- ④ 開啟壓力 Cracking Pressure  
 05 = 0.35 bar ( 5 PSI )  
 空白 = 標準 50 = 3.5 bar ( 50 PSI )
- ⑤ 設計型號 Design No.

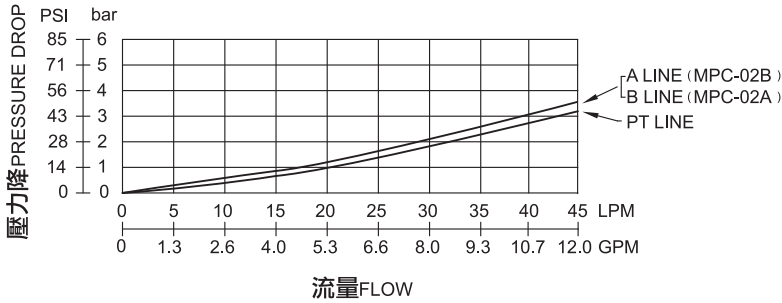
**特性曲線 PERFORMANCE**

測試條件 Test Conditions

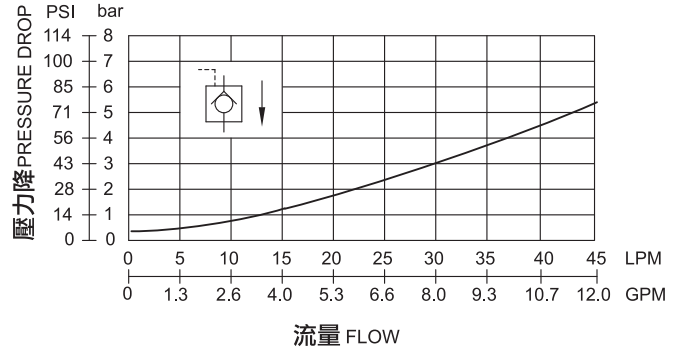
溫度 Oil Temperature: 50°C (122 °F)

黏度 Viscosity: 35cST (163 SSU)

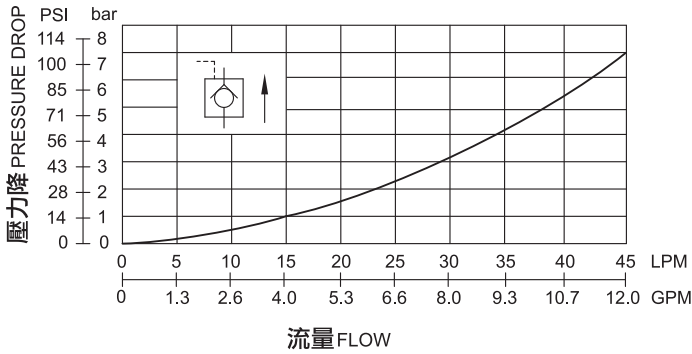
**壓力降特性曲線 PRESSURE DROP**



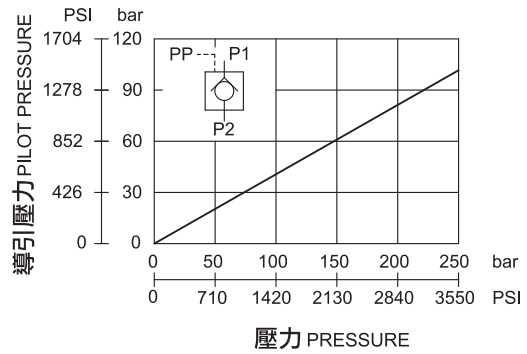
**壓力降特性曲線 (自由流) PRESSURE DROP FREE FLOW**



**壓力降特性 (逆自由流) PRESSURE DROP ( REVERSE CONTROLLED FLOW)**

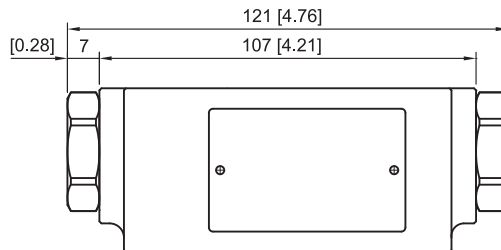
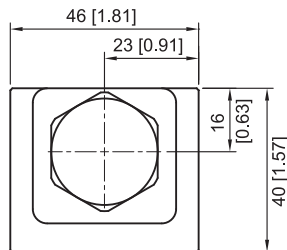


**最低先導壓力特性 MINIMUM PILOT PRESSURE**



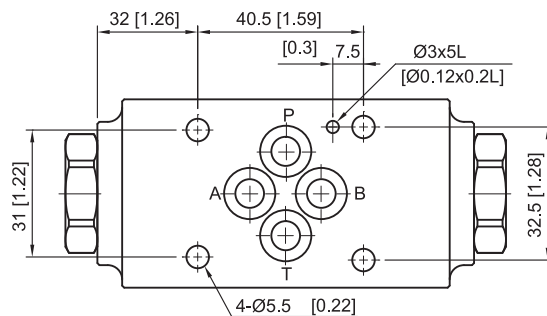
**外型尺寸 DIMENSIONS**

MPC-02W / A / B -30



**安裝面**

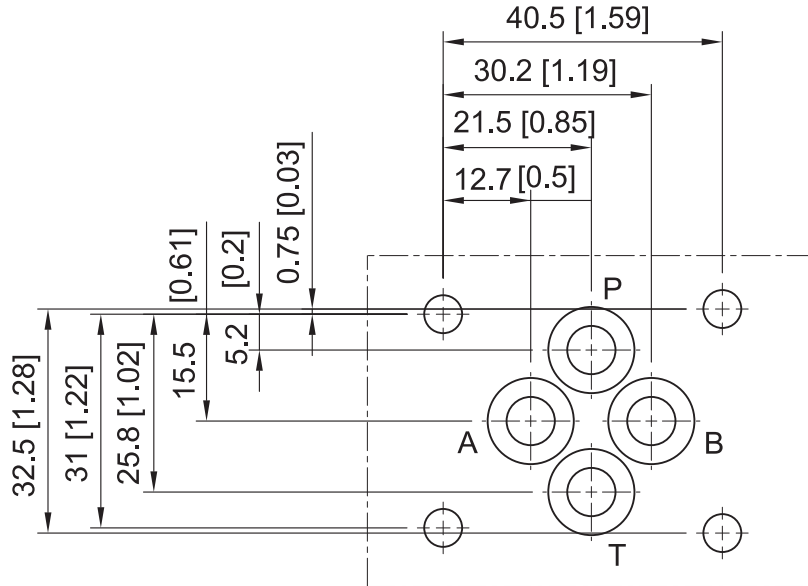
Mounting Interface:  
 ISO 4401-AB-03-4-A



B-d02

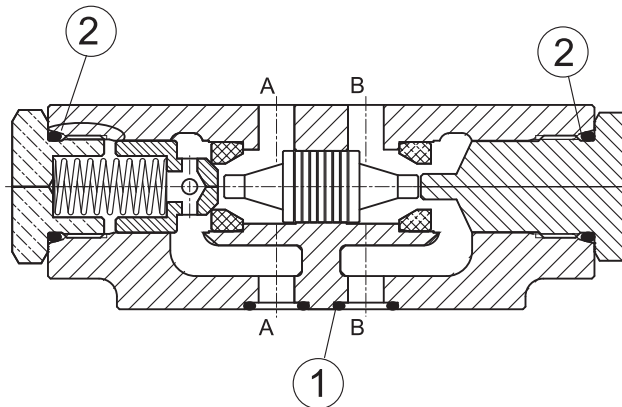
**安裝面 MOUNTING INTERFACE**

ISO 4401-AB-03-4-A

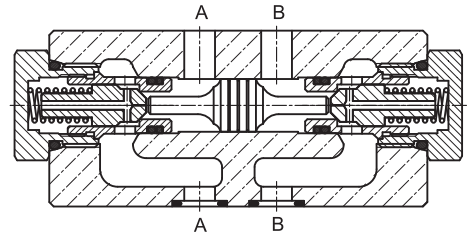


**密封件 SEAL KITS**

MPC-02W / A / B -30



NO.	種類 Description	型號 Specification	數量 Q'ty
1	O 型環 O-ring	AS568-012 HS90°	4
2	O 型環 O-ring	P-18 HS70°	2



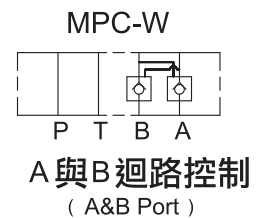
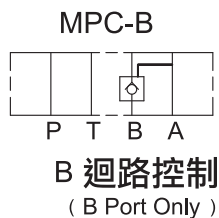
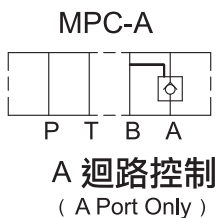
**基本規格 SPECIFICATIONS**

MPC-02 系列 SERIES		
最大工作壓力 Maximum Pressure	bar	210 bar ( 3000 PSI )
最大流量 Maximum Flow	LPM	35 LPM ( 9.25 GPM )
重量 Weight	型式 Code: A,B	Kgs 1.15 Kgs ( 2.54 Lbs )
	型式 Code: W	Kgs 1.15 Kgs ( 2.54 Lbs )
使用油品 Fluid Type		礦物性 耐磨性 Mineral, Anti-Wear
黏度範圍 Viscosity	cST	10-400 cST ( 59-1854 SSU )
使用溫度 Operating Temperature	°C	-15-70°C (-5-158°F)
清潔度 Contamination Level		NAS 12 級以內 Under NAS Class 12
表面處理 Surface Treatment		磷酸鹽皮膜處理 Zinc Phosphate Compound

**型號說明 HOW TO ORDER**

**MPC - 02 W - 05 - 40**  
 ① ② ③ ④ ⑤

- ① 閥系列 Valve Series  
 MPC = 疊加式導引止逆閥  
 Modular Pilot Check Valve
- ② 通稱口徑 Subplate Mounting Size  
 02 = 通稱 Nominal 1 / 4" (6mm)  
 ISO CETOP3  
 DIN NG6  
 NFPA D03
- ③ 控制迴路 Control Port

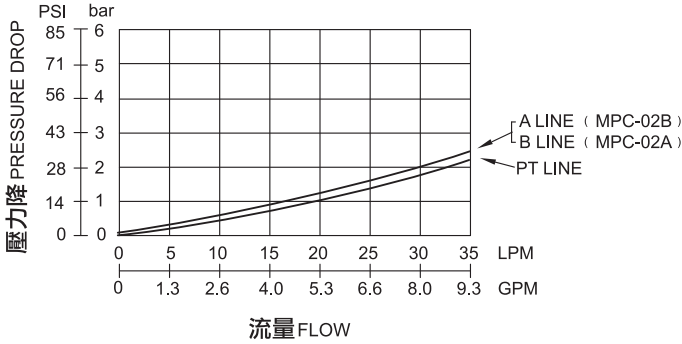


- ④ 開啟壓力 Cracking Pressure  
 05 = 0.35 bar ( 5 PSI )  
 空白 = 標準 50 = 3.5 bar ( 50 PSI )
- ⑤ 設計型號 Design No.

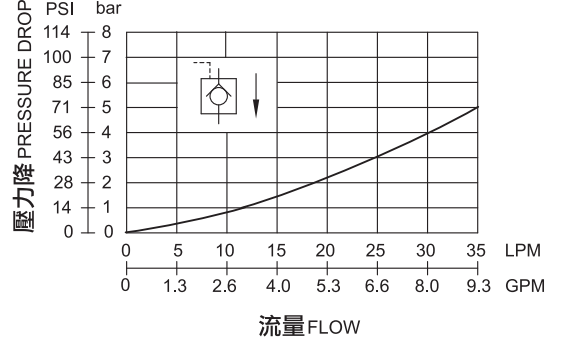
**特性曲線 PERFORMANCE**

測試條件 Test Conditions  
 溫度 Oil Temperature: 50°C (122 °F)  
 黏度 Viscosity: 35cST (163 SSU)

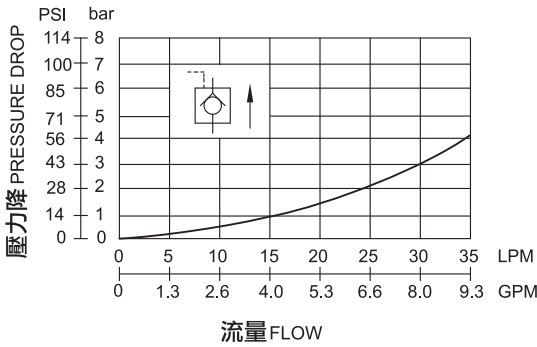
**壓力降特性曲線 PRESSURE DROP**



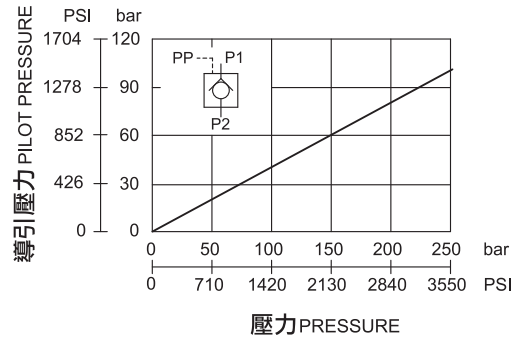
**壓力降特性曲線 (自由流) PRESSURE DROP (FREE FLOW)**



**壓力降特性 逆自由流) PRESSURE DROP (REVERSE CONTROLLED FLOW)**

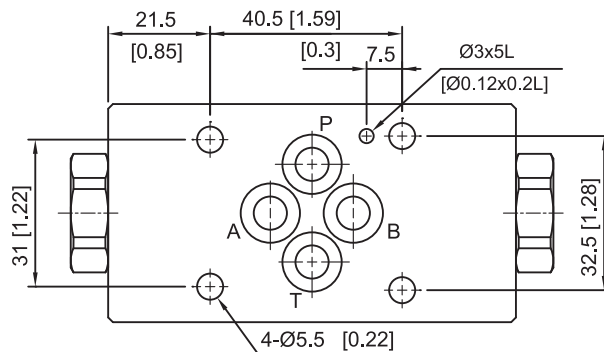
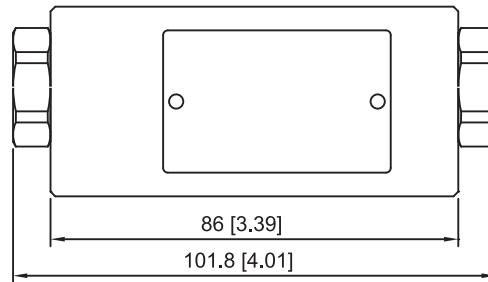
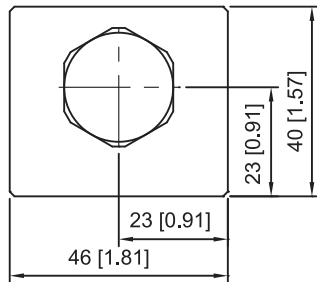


**最低先導壓力特性 MINIMUM PILOT PRESSURE**



**外型尺寸 DIMENSIONS**

MPC-02W / A / B-40

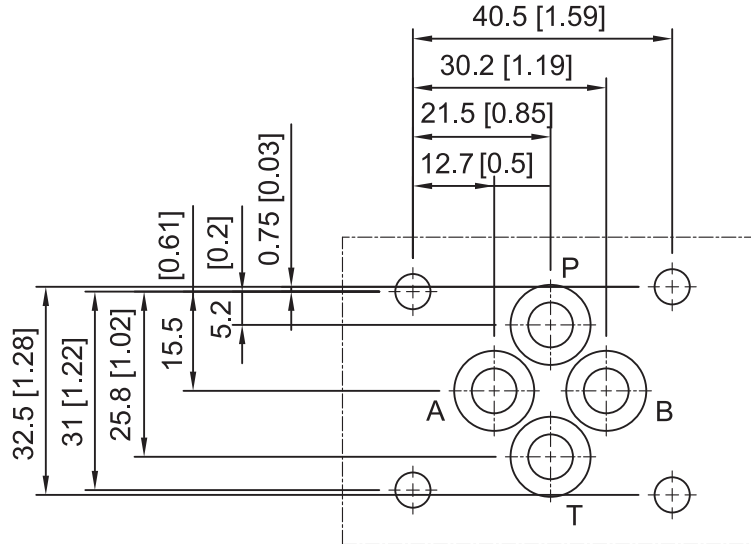


**安裝面**  
 Mounting Interface:  
 ISO 4401-AB-03-4-A

B-d05

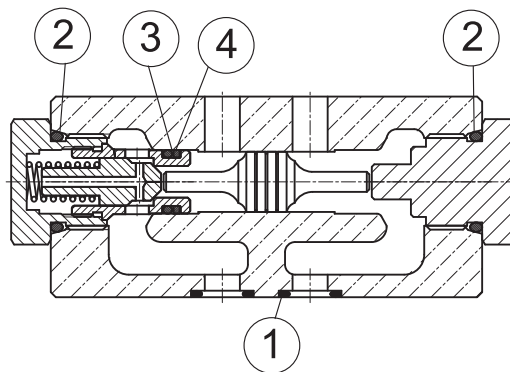
**安裝面 MOUNTING INTERFACE**

ISO 4401-AB-03-4-A

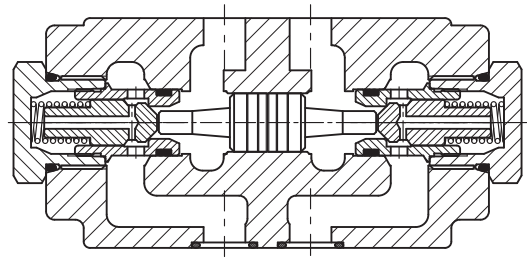


**密封件 SEAL KITS**

MPC-02W / A / B -40



NO.	種類 Description	型號 Specification	數量 Q'ty	
			A / B	W
1	O 型環 O-ring	AS568-012 HS90°	4	4
2	O 型環 O-ring	P-16 HS70°	2	2
3	O 型環 O-ring	AS568-012 HS90°	1	2
4	背托環 Back-up Ring	AS568-012 橡膠	1	2



**基本規格 SPECIFICATIONS**

MPC-03 系列 SERIES		
最大工作壓力 Maximum Pressure	bar	210 bar ( 3000 PSI )
最大流量 Maximum Flow	LPM	70 LPM ( 18.5 GPM )
重量 Weight	型式 Code: A,B	2.5 Kgs ( 5.5 Lbs )
	型式 Code: W	2.5 Kgs ( 5.5 Lbs )
使用油品 Fluid Type		礦物性 耐磨性 Mineral, Anti-Wear
黏度範圍 Viscosity	cST	10-400 cST ( 59-1854 SSU )
使用溫度 Operating Temperature	°C	-15-70°C (-5-158°F)
清潔度 Contamination Level		NAS 12 級以內 Under NAS Class 12
表面處理 Surface Treatment		磷酸鹽皮膜處理 Zinc Phosphate Compound

**型號說明 HOW TO ORDER**

**MPC - 03 W - 40**

① ② ③ ④

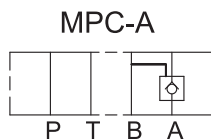
① 閥系列 Valve Series

MPC = 疊加式導引止逆閥  
 Modular Pilot Check Valve

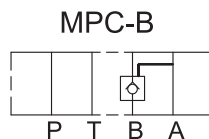
② 通稱口徑 Subplate Mounting Size

03 = 通稱 Nominal 3 / 8" (9mm)  
 ISO CETOP5  
 DIN NG10  
 NFPA D05

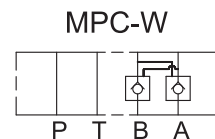
③ 控制迴路 Control Port



**A 迴路控制**  
 ( A Port Only )



**B 迴路控制**  
 ( B Port Only )



**A 與 B 迴路控制**  
 ( A&B Port )

④ 設計型號 Design No.

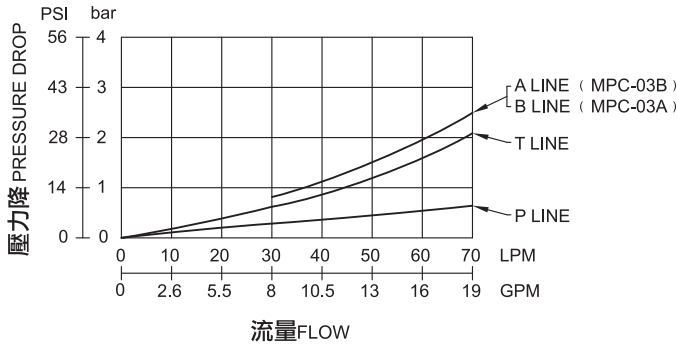
**特性曲線 PERFORMANCE**

測試條件 Test Conditions

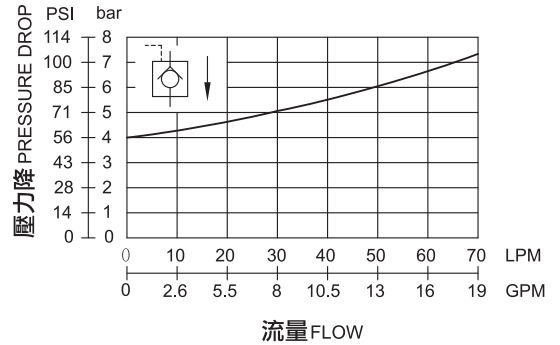
溫度 Oil Temperature: 50°C (122 °F)

黏度 Viscosity: 35cST (163 SSU)

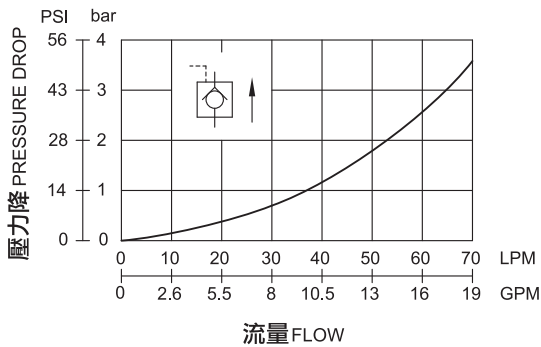
**壓力降特性曲線 PRESSURE DROP**



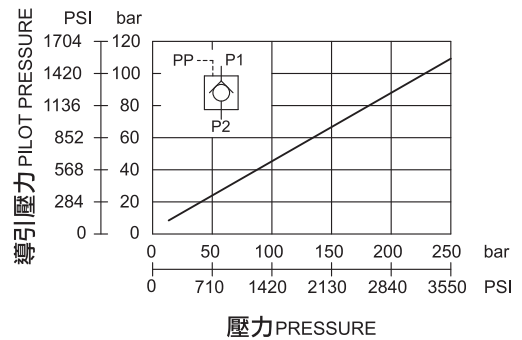
**壓力降特性曲線 (自由流) PRESSURE DROP (FREE FLOW)**



**壓力降特性 (逆自由流) PRESSURE DROP (REVERSE CONTROLLED FLOW)**

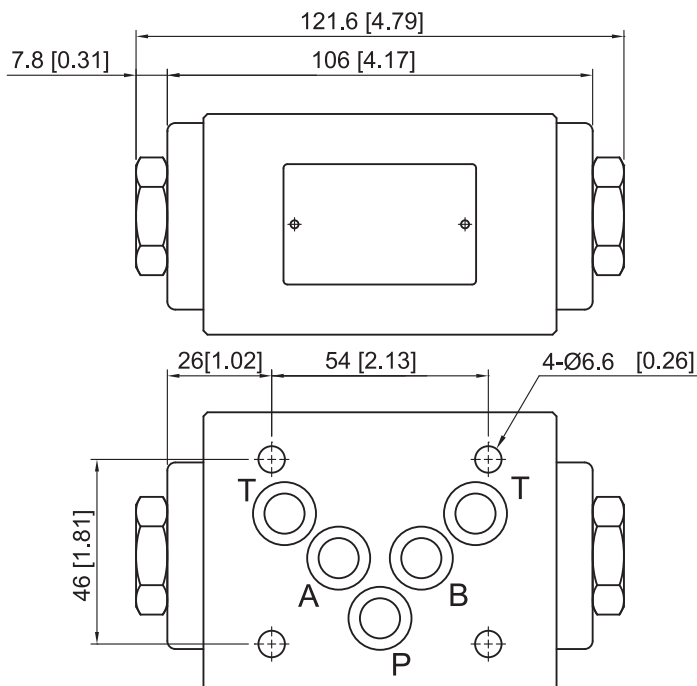


**最低先導壓力特性 MINIMUM PILOT PRESSURE**



**外型尺寸 DIMENSIONS**

MPC-03W / A / B-40

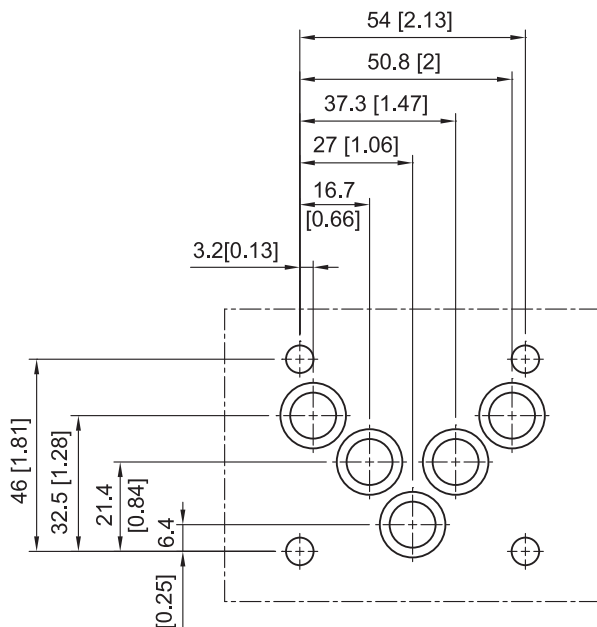


**安裝面**  
 Mounting Interface:  
 ISO 4401-AC-05-4-A



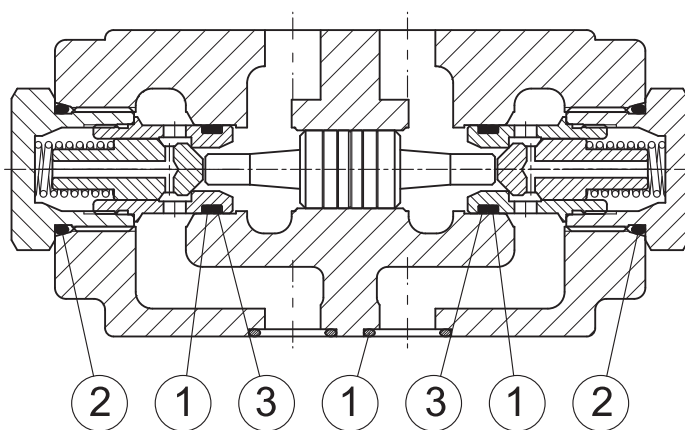
**安裝面 MOUNTING INTERFACE**

ISO 4401-AC-05-4-A



**密封件 SEAL KITS**

MPC-03W / A / B -40



NO.	種類 Description	型號 Specification	數量 Q'ty	
			A / B	W
1	O 型環 O-ring	AS568-014 HS90°	6	7
2	O 型環 O-ring	P-20 HS70°	2	2
3	背托環 Back-up RING	AS568-014 橡膠	1	2



**基本規格 SPECIFICATIONS**

MPC-04 / 06 系列 SERIES			
最大工作壓力 Maximum Pressure	bar	250 bar ( 3626 PSI )	
最大流量 Maximum Flow	LPM	MPC-04	190 LPM ( 50.2 GPM )
		MPC-06	300 LPM ( 79.3 GPM )
重量 Weight	Kgs	MPC-04	7.5 Kgs ( 16.5 Lbs )
		MPC-06	12.8 Kgs ( 28.2 Lbs )
使用油品 Fluid Type	礦物性 耐磨性 Mineral, Anti-Wear		
黏度範圍 Viscosity	cST	10-400 cST ( 59-1854 SSU )	
使用溫度 Operating Temperature	°C	-15-70°C ( -5-158°F )	
清潔度 Contamination Level	NAS 12 級以內 Under NAS Class 12		
表面處理 Surface Treatment	磷酸鹽皮膜處理 Zinc Phosphate Compound		

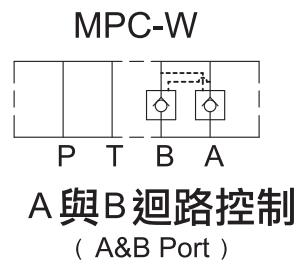
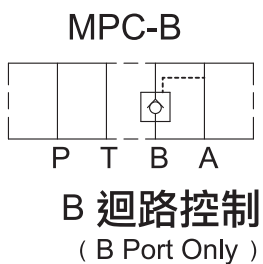
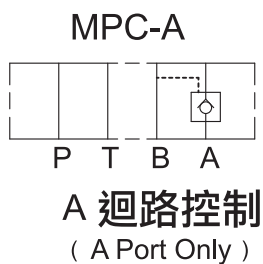
**型號說明 HOW TO ORDER**

**MPC - 04 W - 40**

- ① ② ③ ④

- ① 閥系列 Valve Series  
 MPC = 疊加式導引止逆閥  
 Modular Pilot Check Valve
- ② 通稱口徑 Subplate Mounting Size  
 04 = 通稱 Nominal 1 / 2" ( 16mm )  
 06 = 通稱 Nominal 3 / 4" ( 25mm )

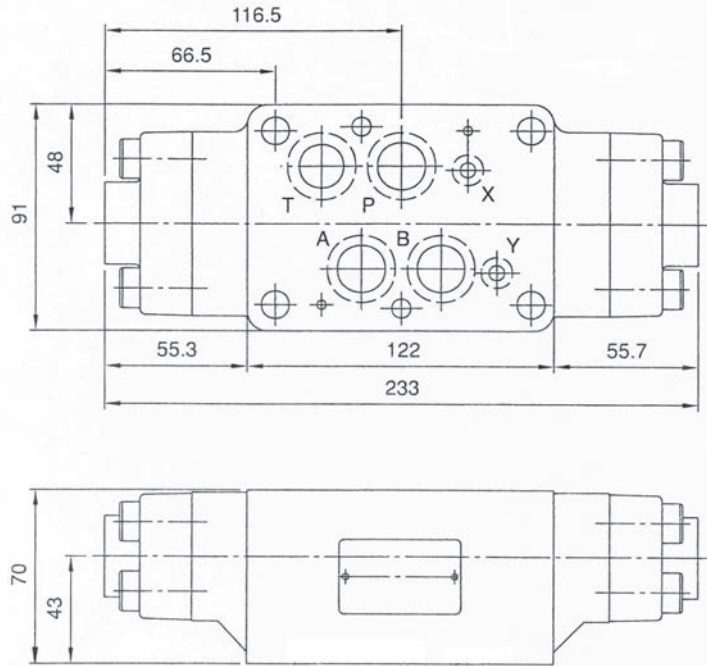
③ 控制迴路 Control Port



④ 設計型號 Design No.

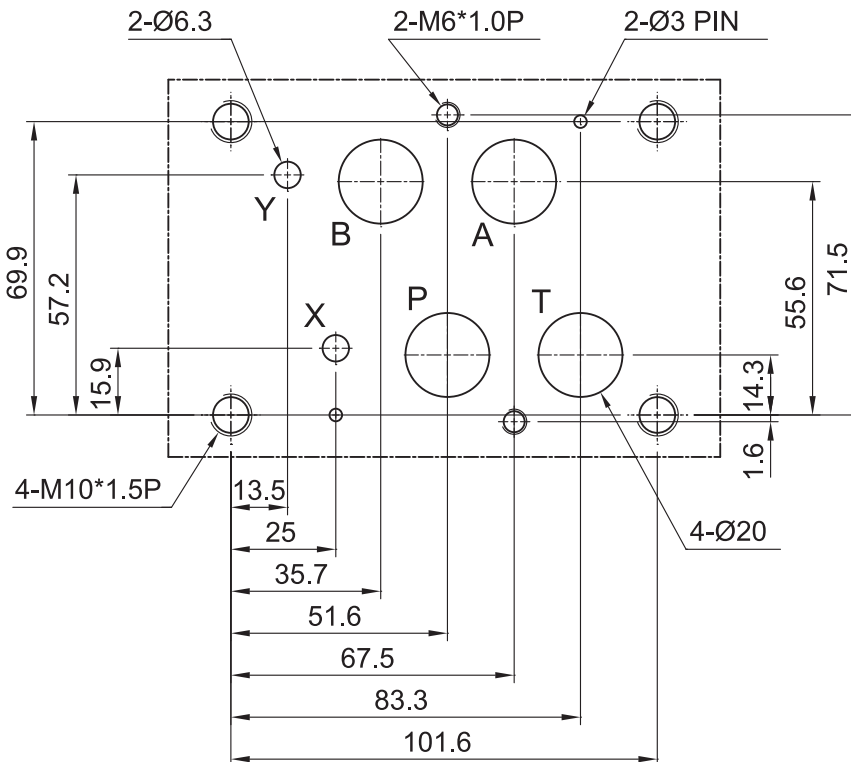
**外型尺寸 DIMENSIONS**

**MPC-04W/A/B-40**



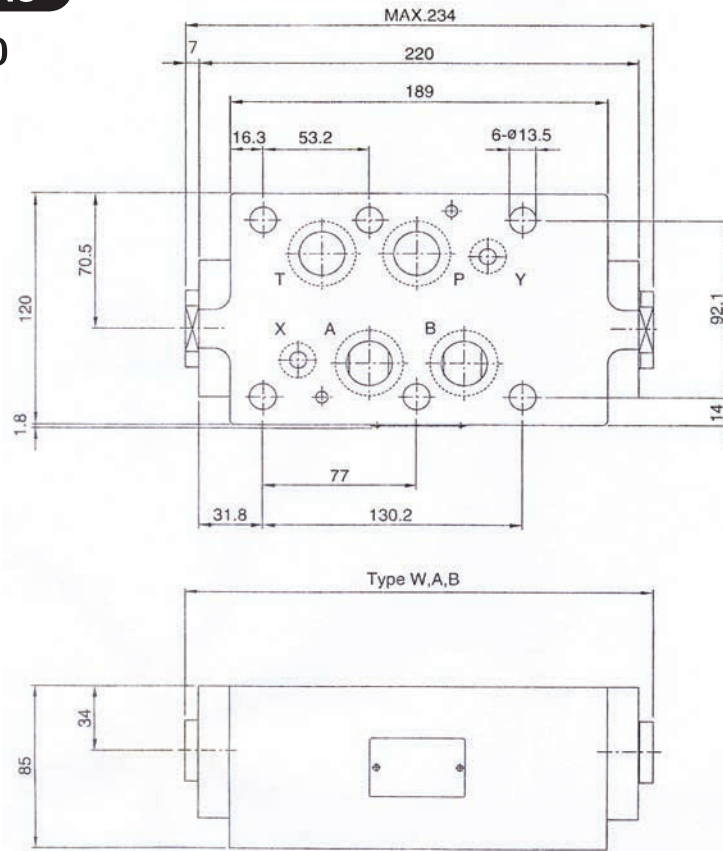
**安裝面 Mounting Interface**

**ISO 4401-AD-07-4-A**



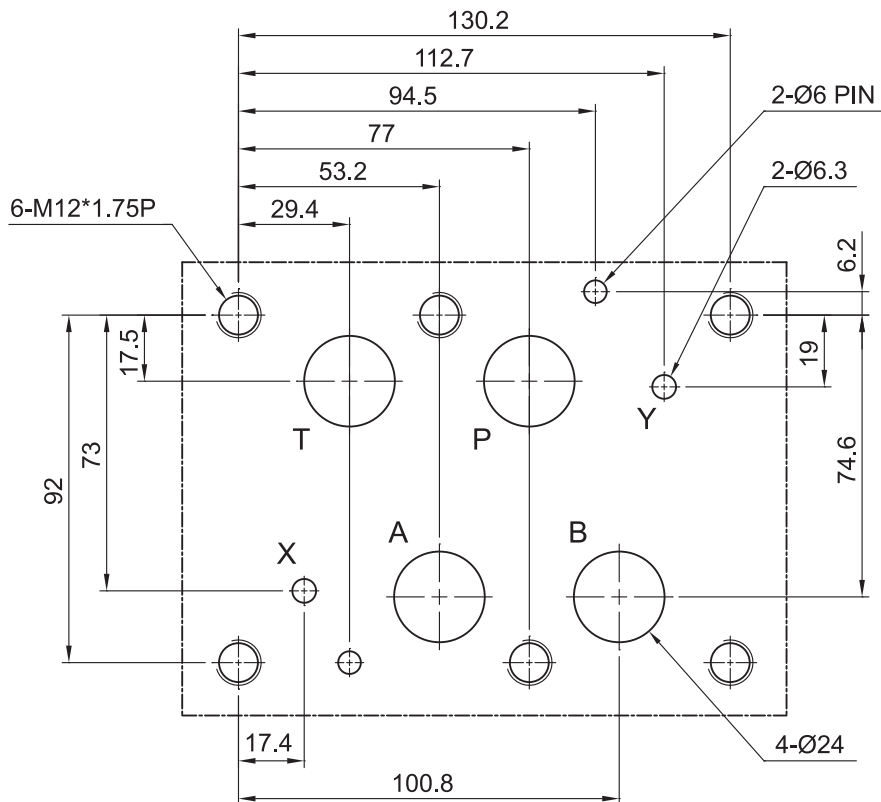
**外型尺寸 DIMENSIONS**

**MPC-06W/A/B-40**



**安裝面 Mounting Interface**

**ISO 4401-AE-08-4-A**



B-d12